



Flemish Entomological Society

www.phegea.org

Everybody who is interested in the fascinating world of insects, may join the Flemish Entomological Society and enjoy its many activities. Only commercial dealers in insects are not welcome.

Meetings are organised in on a Saturday in the "Provinciaal Groendomein Vrieselhof", Schildsteenweg 95, 2520 Oelegem-Ranst. During these informal meetings information is exchanged, difficult specimens are identified, preparation techniques are demonstrated, etc. Also lectures on different entomological subjects are given by national or international entomologists. The Annual Meeting is organised on a Sunday in January or February. Programme: <http://www.phegea.org/Root/Programma.htm>.

During winter time a complete day, the ENTOMODAY, is reserved for lectures and special activities. Excursions and study trips are organised by the different working groups of the society. Info on these events at <http://www.phegea.org/Root/Programma.htm>.

The library, housed at Vrieselhof, with always the most recent issues of several entomological journals, can be consulted as can the reference insect collections of the society.

The society publishes the quarterly journal *Phegea* (March, June, September and December). A sample issue may be obtained from the address given below. Earlier issues of the journal can be consulted at <http://www.phegea.org/Root/Phegea.htm> or on Biodiversity Heritage Library (BHL) <https://www.biodiversitylibrary.org/page/50788014>.

Also an irregular series *Entomobrochure* is published with papers of larger extent. See the list at <http://www.phegea.org/Root/Publicaties.htm>.

The membership fee is 45.00 € per year. Sponsoring membership amounts to 80.00 € per year. A subscription form can be found at <http://www.phegea.org/Root/Registratie.htm>.

The membership includes:

- entrance to the meetings.
- subscription to the journal *Phegea*.
- discount on the other publications of the society.

To join, please send the application form to the secretariat (Dorpstraat 401B, 3061 Leefdaal) and pay the membership fee on the bank account of Vlaamse Vereniging voor Entomologie, Dorpstraat 401B, 3061 Leefdaal, Belgium or use the online form via

IBAN: BE92 0689 3636 9723

BIC: GKCCBEBB

Structure of the Flemish Entomological Society:

- **Working group Leaf miners**

Contact person: Steve Wullaert, sw.demijnen@gmail.com.

This working group focuses on the study of "mining" (micro)-Lepidoptera. Many excursions are organised and the results are included in reports. This group works intensively together with the "Workgroup Faunistics of Lepidoptera". All reports of the excursions and an invaluable source of information on Belgian lepidopterous leaf miners can be consulted on www.bladmineerders.be.

- **Working group Butterflies**

Contact person: Jurgen Couckuyt, couckuyt.jurgen@telenet.be.

This working group covers the West-Palaeartic area and has the following objectives: education (lectures and development of an internal communication channel to exchange information); research; workshops (learning classical entomological techniques, photography, ...); joint activities (meetings, excursions, fieldwork); thematic work (recurrent subtopics: literature, ecology, molecular biology, ...); reporting the internal operation to the workgroup members; publication of research performed by the working group or its individual members. See <http://www.phegea.org/Dagvlinders/DagvlindersStart.htm>.

- **Working group Youth education**

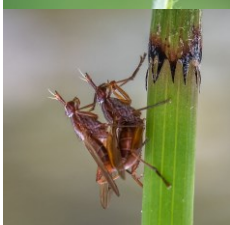
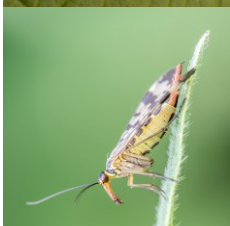
Contact person: Chris Piccini, chrispiccini@hotmail.com.

This working group tries to warm up young people to a more intensive contact with nature and especially with insects. It does this by inviting young people to participate in all kinds of activities such as nature walks, moth nights, excursions, museum visits, exhibitions, lectures, etc.. See <http://www.phegea.org/Root/Jeuqdeducatie.htm>.

- **Working group Faunistics of Lepidoptera**

Contact person: Chris Steeman, christiaan.steeman@telenet.be.

The members of this working group send in their observations for publication in the digital online catalogue. This *Catalogue of the Lepidoptera of Belgium* (<https://projects.biodiversity.be/lepidoptera>) comprises **all** Lepidoptera ever recorded with certainty in Belgium and is always up to date at. Every species is also discussed in more detail and, where possible, illustrated with pictures.



Please, fill out using capitals.

You can also (and preferably) register online at <http://www.phegea.org/Root/Registratie.htm>.

In compliance with the privacy law, please indicate whether your data (name, address, phone- and mobile-number, e-mail address and special interest) may be published in the Newsletter or not. See the privacy statement at <http://www.phegea.org/Root/PrivacyStatement.htm>.

I would like to become a member of the F.E.S. starting from the year:

This information may be published in the Newsletter

	Yes	No
Name:	<input type="checkbox"/>	<input type="checkbox"/>
First name(s):	<input type="checkbox"/>	<input type="checkbox"/>
Date of birth: (will not be published)		
Address:	<input type="checkbox"/>	<input type="checkbox"/>
Street and number:		
ZIP and town:		
Country:		
Phone:	<input type="checkbox"/>	<input type="checkbox"/>
Mobile:	<input type="checkbox"/>	<input type="checkbox"/>
E-mail address:	<input type="checkbox"/>	<input type="checkbox"/>
Field of interest:	<input type="checkbox"/>	<input type="checkbox"/>
.....		

I accept the statutes of the society and I am prepared to pay the yearly membership fee.

The statutes of the society can be found on the website: <http://www.phegea.org/Root/Reglementen.htm>.

Date: Signature:

(Please return to the Secretariat of the F.E.S., Dorpstraat 401B, 3061 Leefdaal, Belgium or to jurate.deprins@gmail.com).

Account number of the Flemish Entomological Society:

Dorpstraat 401B, 3061 Leefdaal, Belgium.

IBAN: **BE92 0689 3636 9723**

BIC: **GKCCBEBB**